

KITCHEN & BATHROOM

# Changing the World From the Kitchen



 **silestone**<sup>®</sup>  
Designed by COSENTINO

WITH HYBRIQ+ TECHNOLOGY<sup>®</sup>

04

Changing the World  
from the Kitchen



Changing the World From the Kitchen	→ 04
What is HybriQ+	→ 06
A Revolutionary process	→ 08
A New Formulation	→ 12
The Result	→ 14
The Sustainable Mineral HybriQ surface	→ 16

24

Ethereal Collection  
Beyond Nature



Ethereal Dusk	→ 26
Ethereal Haze	→ 28
Ethereal Glow	→ 30
Ethereal Noctis	→ 32

52

Silestone® Spaces  
Lifeproof Spaces



Advantages	→ 54
Integrity sinks	→ 56
Washbasins	→ 58
Shower trays	→ 64

34

Sunlit Days  
Mediterranean  
Colour Shades



A Carbon Neutral Series	→ 36
Cala Blue	→ 38
Posidonia Green	→ 40
Faro White	→ 42
Cinzel Grey	→ 44
Arcilla Red	→ 46
Silestone® & Equilibrio Marino	→ 48

18

The New  
Silestone®  
A new era



Welcome Home	→ 18
The New Silestone®	→ 20
Creative Living	→ 22

66

Silestone® Certifications  
and Warranties



Silestone® internationally.	→ 67
-----------------------------	------

# Changing the World from the Kitchen

The ideas that changed the world used to come from a garage. They won't anymore. The kitchen has become the heart and soul of our homes. The epicenter of everything. From our kitchen, we don't only cook.

We now live, work, study, share memories and everything in between. It is only natural that the next revolutionary idea that will change the world will come from the kitchen.

**This is our revolution.  
A revolution of change.  
It won't be about me or  
you. It will be about us.**

**Because nobody can  
change the world alone.  
Nobody can change  
everything, but we can  
all change something.  
And many small changes  
become a big change.**

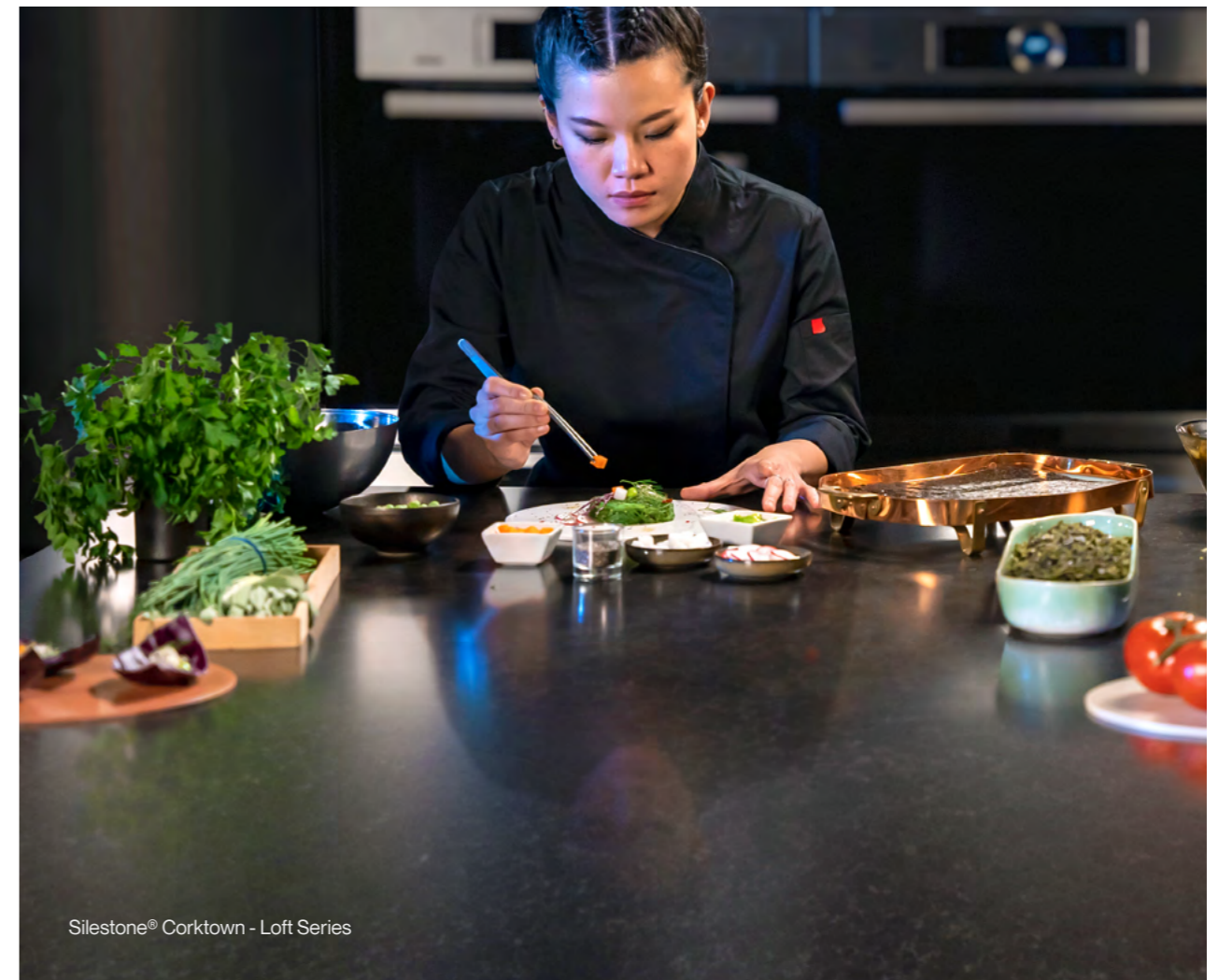
Changing means understanding that we need to reuse, recycle and give things a second life.

Changing means being smart with energy usage and shifting to natural, more efficient ways.

Changing means acknowledging that water is our biggest treasure and we need to value each drop as if it were the last, and keeping our seas and rivers pollution-free.

Changing means doing more with less. Being more aware and committed. Working together. And it starts in our homes.

Together we will change the world from the kitchen.



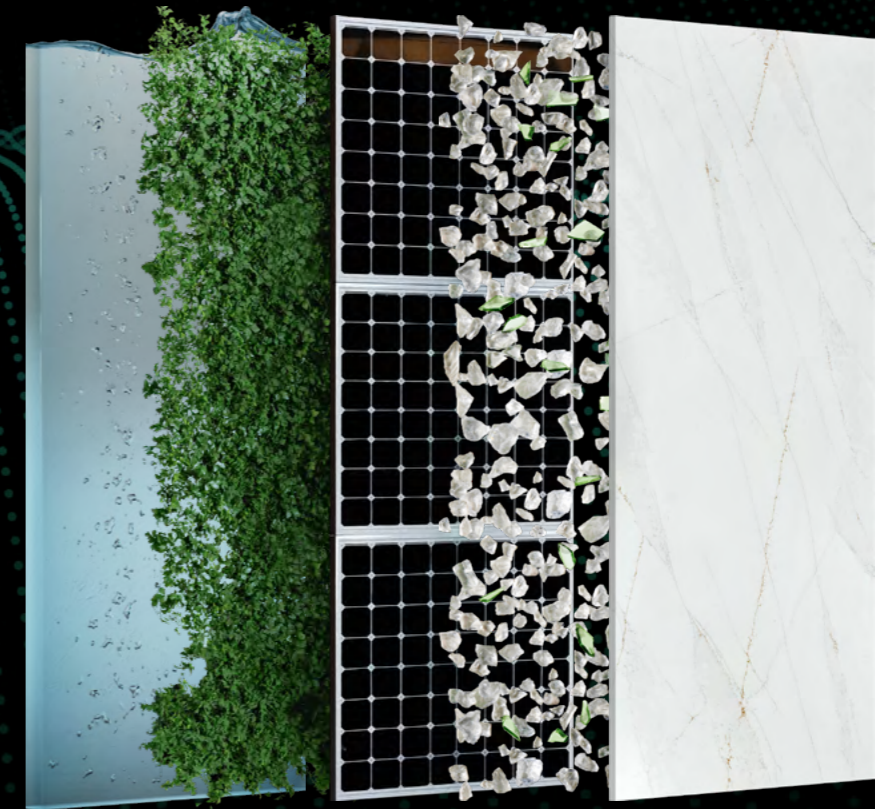
Silestone® Corktown - Loft Series

# What is HybriQ+ Technology®

HybriQ+ is a pioneering and patent registered technology from Cosentino developed for the manufacturing of the new Silestone.

A new high-performance blend of premium minerals and recycled materials produced through a sustainable manufacturing process, with 99% recycled water and 100% electric energy from renewable sources.

Introducing the new Silestone® with HybriQ+ Technology®



  
**99%**  
Recycled Water

  
**100%**  
Renewable Electric Energy

  
**0%**  
Water Discharge

  
**Min. 20%**  
Recycled Materials

Learn everything about HybriQ+ at [Cosentino.com/HybriQ](https://www.cosentino.com/hybriq)

A revolutionary process

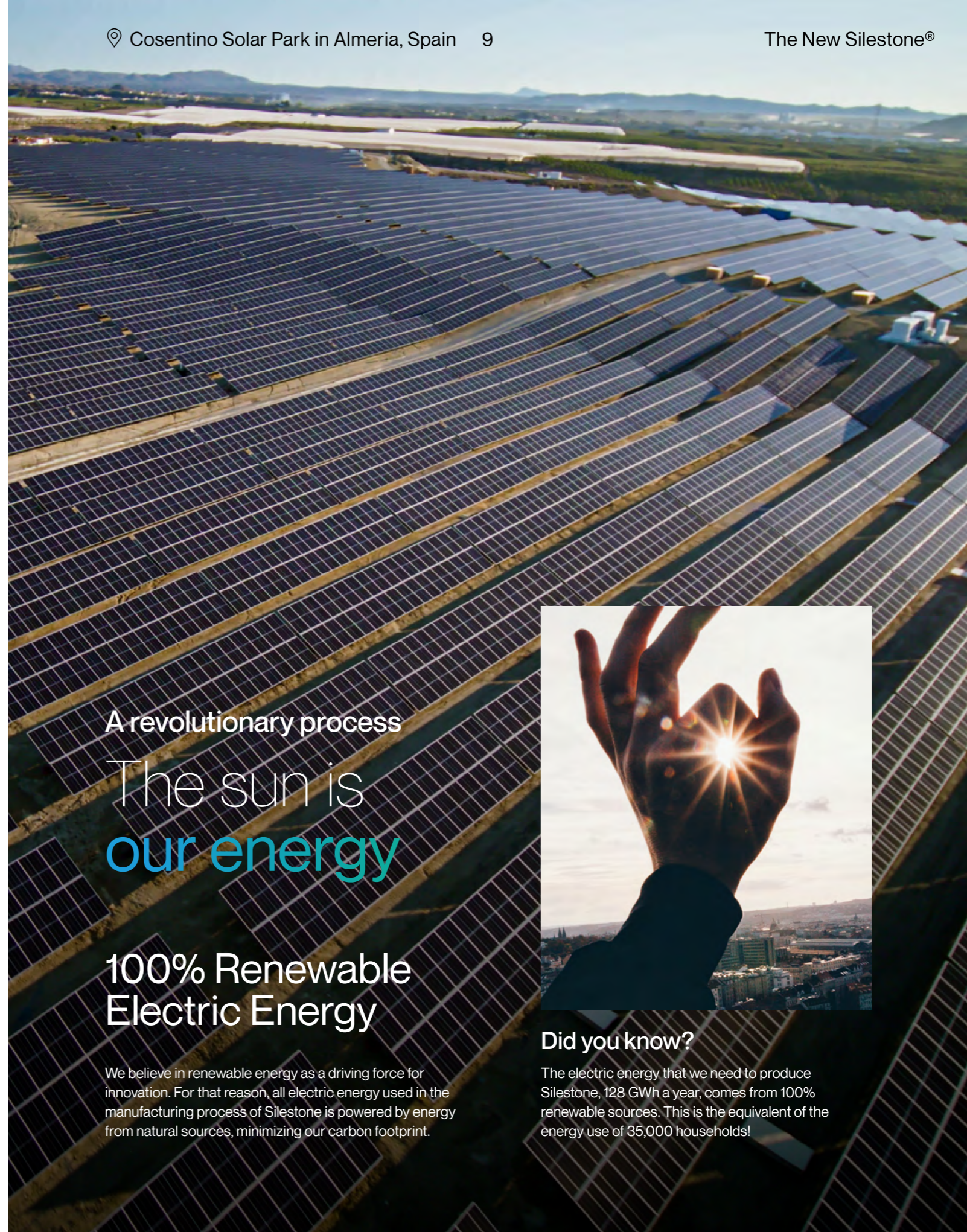
# Not a single drop to waste



## 0% Water Discharge

We don't waste our resources

We are committed to the planet and biodiversity. That is why the HybriQ manufacturing process has Zero Water Discharge. We don't pour a single drop of water or chemicals into rivers or oceans. We want to take care of nature today so future generations can enjoy it.



A revolutionary process

# The sun is our energy

## 100% Renewable Electric Energy

We believe in renewable energy as a driving force for innovation. For that reason, all electric energy used in the manufacturing process of Silestone is powered by energy from natural sources, minimizing our carbon footprint.



Did you know?

The electric energy that we need to produce Silestone, 128 GWh a year, comes from 100% renewable sources. This is the equivalent of the energy use of 35,000 households!



A revolutionary process

We take care  
of the present  
**to protect the  
future**



## 99% Recycled Water

We know water is our biggest treasure. Thanks to a circular system of continuous filtration, we are able to use 99% recycled water in the manufacturing process of Silestone. We save every single drop.



### Did you know?

We reuse 80,000 m<sup>3</sup> of water everyday. With that water, we could water 2,700 hectares of crops. That's over 1,000 football fields, every day!



# A new Formulation

## Selection of premium minerals

We carefully select a mix of different premium minerals, specifically selected with the final design in mind achieving unseen effects, hues and finishes, while maintaining the hardness and performance of quartz, but with the low crystalline silica levels found in natural stones.



## Recycling and circular economy is our philosophy

## A minimum of 20% Recycled Materials

We believe in waste reuse and giving them a second life through circular economy. That is why, Silestone manufactured under HybriQ+ Technology includes at least 20% of recycled material, such as glass, in its composition.



# The result: a more beautiful and sustainable product. More Silestone®

Thanks to HybriQ technology, the new Silestone maintains all the properties and certifications in terms of resistance, hardness and hygiene, while increasing its aesthetic possibilities thanks to the selection of premium minerals, and its sustainability due to the new manufacturing process and the addition of a minimum of 20% recycled materials, such as glass, to its composition.



All sustainability and performance assessments by Silestone are acknowledged and certified by the external international laboratory DNV



Silestone® Faro White - Sunlit Days Series



# The Sustainable Mineral HybriQ Surface

The new Silestone®  
With HybriQ+ Technology

We innovate to inspire you. To take care of you, your loved ones and the planet. We want to improve your life and that of generations to come. Let's change the world. Now. Together, it's easier. Made with 100%

electrical renewable energy, 99% recycled water, premium minerals and a minimum of 20% recycled materials. Silestone® is the surface designed for the planet. For your home. For your life.



**HYBRIQ+**  
TECHNOLOGY®

**We welcome you** to a new era to celebrate life and colour. Unleash your creativity. Share what is important to you. Transform your interior space. Love your home. Take care of our planet. Awaken your excitement for art and design. Anticipate and create a future together. Connected. United. Positive.

**A new me. A new you.**

**A new Silestone®.**

To creators.  
To artists. To design lovers.  
To those who are rebellious and don't conform.  
To those who pursue their dreams.  
To those who share values.  
To those who are responsible and conscientious. To chefs.  
To those who get dirty when cooking. To those who love the home. To families, to friends, to couples. To everyone.

**Welcome home.**

# The New Silestone®: Designed for Life

A more human way of living.  
More sustainable. More yours.

The kitchen is a space to enjoy cooking and much more. It is where we share the values of being together, of connecting with our loved ones and of life. Silestone® transforms your kitchen into a healthy, sustainable and personal space.

Silestone® is a hybrid surface of minerals and recycled materials, manufactured with the exclusive and innovative HybriQ® technology. Silestone® has set the major trends in the world of kitchen worktops. Once again, we evolve.

We want to be  
part of your life.

For us, the kitchen is the soul of the home and the centre of unique moments. Life in the kitchen is better when we share it. We would love to be part of it, and of your home, inspiring you and making your daily life easier, more enjoyable, sustainable and even more exciting.

In a space for enjoyment in good company and wellbeing, we want to provide an experience that improves people's lives, with innovative and sustainable worktops that express your own lifestyle, that follow your daily life and that awaken in you the best designer, chef or artist.



# The New Silestone®: Creative Living

 silestone®

We encourage you to create a unique worktop. Yours. Welcome colours that excite you and connect you to the way you are, with designs inspired by your life. Enjoy creating with the range of colours and textures of Silestone®. Reimagine your kitchen. Colour your life in a shade that is warm,

exciting, evocative, peaceful, elegant, moving, lively or soothing. How are you feeling today? Let Silestone® bring colour to your kitchen. Just fill it with the people you love and share the best experiences. The one you have created.

Your worktop is  
the canvas of your life.  
Live it in colour.

Colours that excite, suit your style and inspire your unique way of living. Textures that convey sensations, making you feel something new. Get inspired. Create. This is Silestone®. Immerse yourself in the depth of colour created by the minerals

that make up Silestone®. From a veined pattern that offers movement and natural beauty to urban and industrial tones that add character to your home. There are a thousand possibilities to experience colour.



silestone®

# Ethereal Collection

## Beauty Beyond Natural

Avant-garde and  
full of beauty.

Introducing the Ethereal collection. An unparalleled leap in design, sustainability and innovation developed with HybriQ+® technology, which takes the concept of marble-style colours to a new dimension.

Ethereal, an evolution of our acclaimed Eternal Collection, interprets the dreamlike beauty of the sky by drawing a deep, fine veins on a white canvas.

The result: the most cutting-edge and avant-garde Silestone® series, a redefinition of veining that creates a new category in terms

of performance and design. Here are the four colours: Dusk, Haze, Glow and Noctis.





Pair it with dark and rusty shades.

The bluish tone of its veining gives it a modern touch that, together with its avant-garde linear pattern, makes **Ethereal Dusk** one of the most urban and contemporary designs in the collection.



Ethereal Dusk is that unique sunrise, that unparalleled feeling of being the first person to see the light of day, where peace is seen on the horizon in the last moments of darkness.

Reddish wood and metals reminiscent of rust, such as *gunmetal*, or old-cut metals, such as bronze and copper, also go well with this colour.

It works very well with dark colours such as black and brown.

**Ethereal Haze** is a soft colour with a strong character, in which the interplay of patterns merges with the deep, neutral background colour.



Ethereal Haze is a sea of clouds that offers the sensation of being on the edge of immensity.

A veil that separates us from the moment in which we live to transport us to imaginary worlds through the wind that moves the clouds over the mountains, creating the illusion of a calm and fluffy sea.

Its combination of cool and warm makes it perfect for spaces with a *total* wood or cement look.

It also works well with coppery metals, gold colours, limestone and more rustic fabrics.



Complements copper and gold tones.

Our revamped version of Calacatta Gold with bolder, more modern structure. The elegant gold and grey veining of **Ethereal Glow** blends into a tinged white foundation to add depth to the design.



Ethereal Glow is inspired by the sunset. A rhapsody of colours in the sky with an igneous glow from which you cannot look away.

The sky gives us a spectacular display of yellow, red, orange, grey... and the clouds lose their shyness

and appear blazing and confident.

The elegant gold and grey veining blends into a tinged white foundation, running through the slab and bringing colour to every corner, thus adding depth to the design.



Mix it with dark grey and neutral woods.



**Ethereal Noctis** draws on the designs of the Eternal collection with a new, renewed and conservative approach. Black features add contrast and elegance to the colour range. The grey details and the short-veined background provide depth.




Inspired by the darkness after sunset, Ethereal Noctis hides and shelters us in the depths of the night, making us feel life with a strange halo of unreality.

This colour elevates the sophistication of the interior design, in combination with brass lamps, stained wood flooring and white and grey furniture for a more industrial look. A versatile colour suitable for residential use or for large projects.



Add industrial features to achieve a versatile look.

# Sunlit Days: Mediterranean Colour Shades

A person is riding a bicycle on a dirt path towards a lighthouse at sunset. The lighthouse is a white building with a tall tower and a lantern room. The sun is low on the horizon, creating a warm, golden glow. The sky is filled with soft, wispy clouds. The overall scene is peaceful and evocative of a Mediterranean coastal town.

Welcome  
to the Mediterranean.

Sunlit Days. An immersive and sensory journey through light and colour that takes us back to our roots and leads us to a more natural, sustainable and human future.

We are launching the first Silestone® Carbon Neutral collection, a commitment to sustainability in which we reduce and offset the emissions of the manufacturing process with Biogas and wind power projects.

This environmental commitment results in a partnership program for the preservation of the seabed and our environment.

Sunlit Days is inspired by the evocative Mediterranean shades of a unique lifestyle.

A new breath of fresh air. A new spirit.  
A new Silestone®.

**A Carbon Neutral Series.** Silestone® Sunlit Days is manufactured entirely with renewable electricity and recycled water. We offset all carbon emissions through UN-certified projects, thus achieving Carbon Neutral Certification.



A new era for Silestone® and the planet.

**We calculate our carbon footprint.**

Through the use of consumption data from across the value chain and throughout the product lifecycle.

**We reduce our impact**

We promote energy efficiency, emissions reduction and sustainable mobility.

**We offset our emissions**

We collaborate in official UN projects to offset GHG emissions.

# Sunlit Days Cala Blue

The first time you see the sea and its breeze embraces you. The feeling of floating in immensity. Away from everyday concerns, letting the sun and water bathe your skin. Savor the salt that embraces your body, the sound of the waves breaking on the shore. Look at the blue of an infinite horizon. A experience for all five senses. A unique touch that caresses your skin like the sea.

That is Cala Blue. A deep and stimulating blue colour which, in its interplay with light, balances between the depth and the surface of the sea. A sophisticated blue colour that vibrates with the rest of the elements that surround it. Let yourself be rocked by the Mediterranean.

Worktop and Backsplash ←  
Silestone® Cala Blue  
Integrity Due S Sink (x2)  
Silestone® Cala Blue



# Sunlit Days Posidonia Green

Time stands still under the waters of the Mediterranean. Everything is slow and harmonious. The posidonia meadows sway in a mesmerising dance of incredible greens. Greens that captivate the eye and bring life to the seabed, both literally and metaphorically.

That is Posidonia Green. A green that invites us to surround it with colours and brings this beauty, hitherto inaccessible, to our spaces. A green that radiates vitality, joy and nature. A green with a variety of brightness and shade depending on the moment, like the nature of the sea that gives it its name.



Worktop and Backsplash  
Silestone® Posidonia Green  
Integrity Due XL Sink  
Silestone® White Zeus

# Sunlit Days Faro White

White is the colour of the Mediterranean. The one that clads the walls that the sun bathes in every day. The one that captures its light and evokes its warmth. White embodies purity par excellence, and more than any other colour, conveys serenity.

It is the colour of simplicity, but the most complex and versatile of all.

Faro White is inspired by the lighthouses that guide the way for ships. A very special white that tells stories of light and sea, and of people who love life.

Faro White is the flash of light that brings us closer to what really matters: our loved ones.

→ Worktop and Backsplash  
Silestone® Faro White  
Integrity Due XL Sink  
Silestone® Faro White  
Flooring  
Dekton® Nacre Kraftizen



# Sunlit Days Cincel Grey

Grey is just grey, some people say. Those people will speak of wood as just that, wood. They will not speak of ebony, almost jet-like, or crimson mahogany, nor will they understand when they look at a tree that it is not just that, but a cypress.

Because wood is not just wood, nor is grey just grey. It is a grey for those who know how to look and feel.

Cincel Grey is a silky, fine-veined grey, full of nuances. A grey that reveals an array of contrasts between matt, glossy and reminiscent of other colours when bathed in light.

Its feel, like that of the other colours in the series, is a sensory experience even for those who are used to delighting in the textures of different types of wood.



→ Worktop and Backsplash  
Silestone® Cincel Grey  
Integrity Due S Sink (x2)  
Silestone® Cincel Grey  
Flooring  
Dekton® Micron (Kraftizen)  
Flooring  
Dekton® Albarium (Kraftizen)

# Sunlit Days Arcilla Red

Arcilla Red is a red shade that makes you fall in love. An earthy red shade that tastes like wine and smells of petrichor. A red shade that brings the purest essence of our origins to our home. A burst of colour, character, and a beating heart. A red shade that transforms the

kitchen into a living space waiting to be experienced. A colour that can be experienced with all five senses. A unique texture to enjoy both to the touch and to the eye. Arcilla Red brings this passion, this closeness to the earth, and this pure life to any space.



→ Worktop and Backsplash  
Silestone® Arcilla Red  
Integrity Due XL Sink  
Silestone® Arcilla Red  
Flooring  
Dekton® Danae



# Silestone® & Equilibrio Marino

A partnership  
to save the  
Mediterranean.

Equilibrio Marino is a non-profit environmental organization comprised of divers, scientists and sea-lovers that work to restore and preserve marine ecosystems.

Their projects not only help the sea, but also help people, generating benefits from their valuable work. With this partnership, Silestone® wants to give back to the sea what it has given to us.



# The Posidonia meadows are essential to the Mediterranean and to our lives.

The Mediterranean, the Mare Nostrum, our sea. It is much more than a map, a climate, a civilisation or a painting.

The Mediterranean is a unique way of life that should be lived in a special and authentic way. It is a particular way of seeing, thinking and acting that has influenced the whole world.

The connection with the sea, the sun and nature shapes a friendly, smiling, generous and earthbound personality. It makes

us easy-living people, aware of the importance of nature. We live in the here and now. We savor every day and every moment.

It is a melting pot of cultures, formed over centuries, with a wealth of history and culture that has shaped our own very unique personality.

This Mare Nostrum is its reflection. An ode to biodiversity, a dance of species coexisting in a constant and delicate balance.

There are more than 12,000 species of native plants and

animals living in the Mediterranean Sea, many of them endangered or threatened with extinction. The culprit has a name: plastic.

Our sea has reached record levels of microplastic pollution. The concentration of microplastics has now reached 1.25 million fragments per km2 and already affects more than 130 species.

This way of life we love so much cannot exist without the sea. It is time to become aware and act. It is time to restore the marine life.



Team preparing for the dive. Debris collected during the dive. Boat "Mar de Alborán" during the cleaning of the seabed.

# Silestone® Lifeproof Spaces

We transform spaces that  
transform people.

Go boldly and create your own space:  
a kitchen for sharing, a bathroom for  
wellbeing.

Enjoy all the combination possibilities  
of Silestone®. A surface designed for  
your lifestyle.



# Enjoy your home. We make it easy.

We want you to live your own space. We want you to create, enjoy, share and be moved without anything stopping you.



## Silestone® keeps up with you.

The high impact resistance of Silestone® allows for the handling of hard objects (pots, trays, etc.) with total peace of mind.



## Experiment and create new recipes.

Silestone® is a non-porous surface that is highly resistant to stains from coffee, wine, lemon juice, oil, vinegar, make-up and many other everyday products.



## More Sustainable. More Beautiful.

Sustainability and innovation come together in a surface composed of carefully selected minerals and recycled materials that give your worktop depth of colour and high performance.



## Silestone® Textures. You've never felt anything like it.

### Polished

Extreme gloss, smooth surface to the touch and uniform, intense and consistent colour.



### Suede

A matte appearance that conveys a unique experience to the touch for its beauty and fineness.



### Volcano

Rustic and rough texture, at the same time attractive, soft and pleasant to the touch.



# Sinks

## Silestone® Integrity

The Integrity sink offers all the advantages of Silestone® in a revolutionary product. Thanks to the “one-piece” effect, worktop and sink become one.

### Integrity ONE

A single-bowl sink with curved outline.

### Integrity TOP

Easy to install. It creates a sense of continuity and integration with the worktop. No complications. No need for special tools.

### Integrity DUE

DUE is available in three sizes: DUE S, ideal for double-bowl sink; DUE L, perfect for single-bowl sinks; and DUE XL, the best choice for large sinks.

### Integrity Q

Integrity Q is our new sink featuring a monolithic, minimalist design.



→ Integrity ONE  
51 x 41 x 15.5 cm Radius 13cm



→ Integrity DUE S  
34 x 37 x 15.5 cm Radius 6.5cm



→ Integrity DUE L  
51 x 37 x 15.5 cm Radius 6.5cm



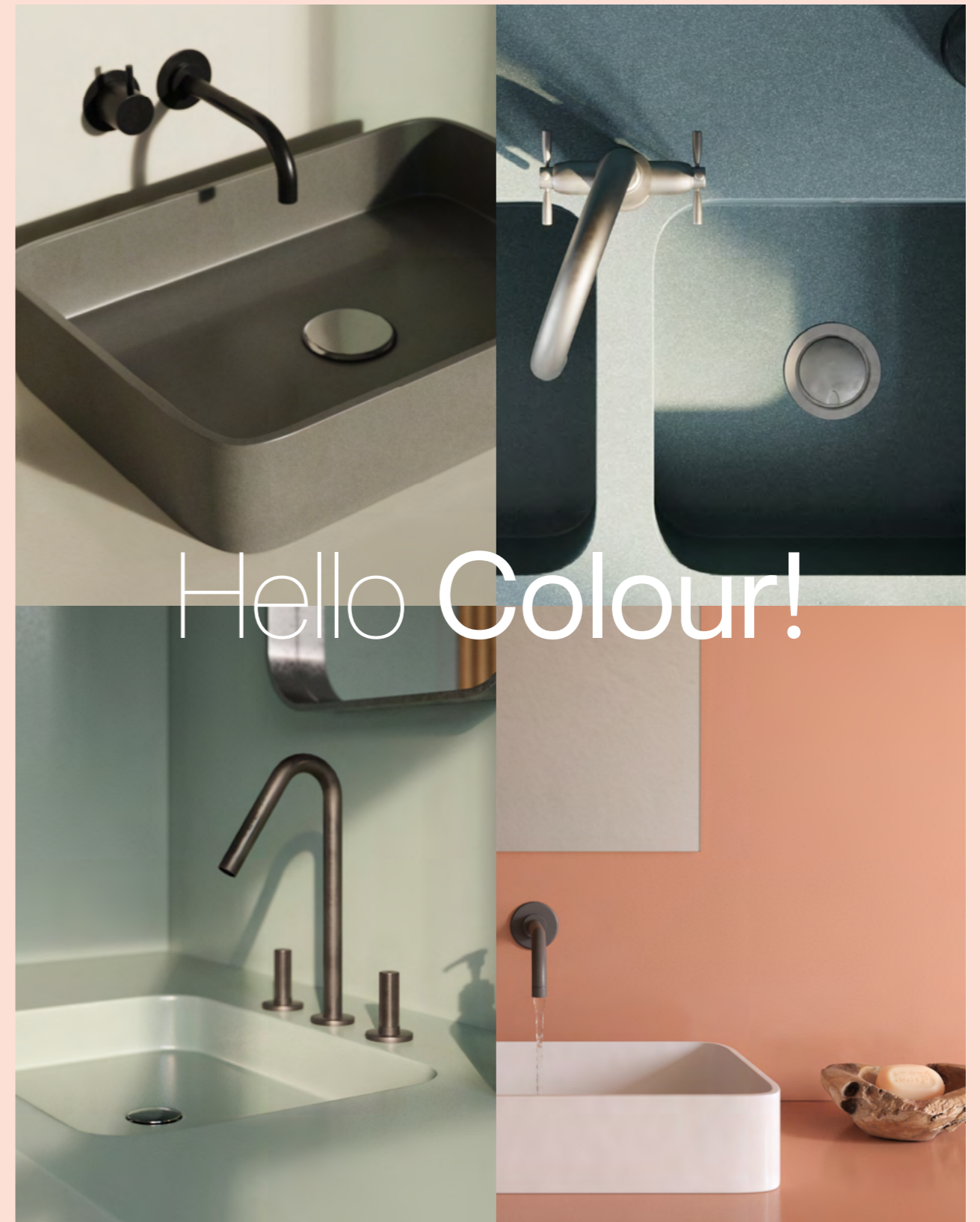
→ Integrity DUE XL  
67 x 43.5 x 21 cm Radius 6.5cm



→ Integrity Q  
51 x 41 x 15.5 cm Radius 3cm



→ Integrity TOP  
51 x 37 x 15.5 cm Radius 6.5cm



# Washbasins in pieces and custom washbasins

Easy to clean and hygienic surfaces featuring sinuous, organic and linear shapes. Custom washbasins and tops suitable for any space.

## → Marie

Marie Top Basin: 51 x 37 x 10 cm  
Marie S Basin: 34 x 37 x 7 cm  
Marie L Basin: 51 x 37 x 7 cm

Length from 47 to 320\* cm  
Width from 44 to 60 cm  
2cm Straight Edge or 10 or 12.5 cm Strip

\* Jumbo slab only.



## → Evita

Evita S Basin: 50 x 30 x 10 cm  
Evita L Basin: 65 x 30 x 10 cm  
Evita Q Basin: 51 x 41 x 10 cm

Length from 60 to 320\* cm  
Width from 40 to 60 cm  
1.2cm Straight Edge or 12.5cm Strip

\* Jumbo slab only.



## → Elegance

Basin 49 x 30 x 10 cm



## → Armony

Basin 49 x 30 x 10 cm



## → Symmetry

S Basin 33 x 23 x 7 cm  
M Basin 38 x 25 x 7 cm  
L Basin 58 x 30 x 7 cm



## → Reflection

S Basin 49 x 30 x 8 cm  
M Basin 90 x 30 x 8 cm  
L Basin 120 x 30 x 8 cm



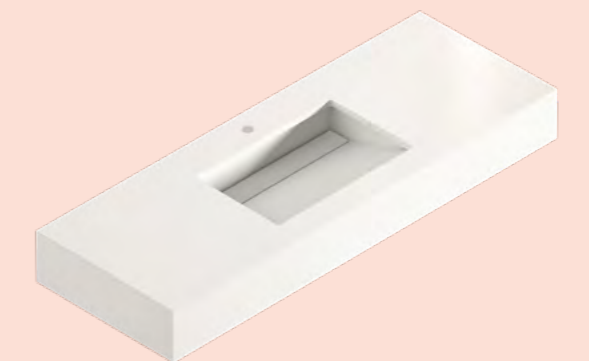
## → Silence

S Basin 49 x 30 x 8 cm  
M Basin 90 x 30 x 8 cm  
L Basin 120 x 30 x 8 cm



## → Simplicity

Basin 49 x 30 x 10 cm





→ Worktop and Backsplash  
Silestone® Posidonia Green  
Marie L Washbasin  
Silestone® Posidonia Green  
Flooring  
Dekton® Kreta



← Worktop and Backsplash  
Silestone® Arcilla Red  
Marie Top Washbasin (x2)  
Silestone® White Zeus  
Wall Cladding  
Dekton® Argentium



→ Worktop, Panelling and Floor  
Silestone® Cala Blue  
Marie Top Washbasin  
Silestone® White Zeus  
Exilis Shower Tray  
Silestone® White Zeus





→ Worktop and Flooring  
Silestone® Faro White  
Marie Top Washbasin (x2)  
Silestone Grey Expo  
Wakka Shower Tray  
Silestone® Grey Expo

# Shower trays

The bathroom is an intimate space of calm and healing, a source of wellbeing full of sensations. Silestone® shower trays blend harmoniously into the bathroom. An easy to maintain and hygienic surface with unique colours and textures.

→ Wakka

Length from 70 to 250 cm  
Width from 70 to 150\* cm



→ Wakka Brim

Length from 70 to 250 cm  
Width from 70 to 150\* cm



→ Kador Suite

Length from 70 to 200 cm  
Width from 70 to 150\* cm



→ Exilis

Length from 70 to 320 cm  
Width from 70 to 150\* cm



# Silestone® Certificates & Warranties

The peace of mind that  
you deserve.

Silestone is fully certified in terms of hygiene, performance and sustainability from the most demanding and reputed independent global agencies and laboratories. And of course the 25-years warranty from Cosentino.



GreenGuard Gold



GreenGuard



DNV · GL



EPD



DNV



NSF



25-Year Warranty





**Cosentino S.A.U.**

Ctra. Baza a Huércal-Overa, km 59  
04850 Cantoria  
Almería - España  
+34 950 444 175

info@cosentino.com  
www.cosentino.com  
www.silestone.com

- 📍 SilestonebyCosentino
- 📘 SilestonebyCosentino
- 🐦 Silestone



\* See specific warranty conditions.  
\*\* For more information on NSF Certified colours, visit [www.nsf.org](http://www.nsf.org)  
\*\*\* The Carbon Neutral certification only applies to the Sunlit Days series.

